

medial clavicle

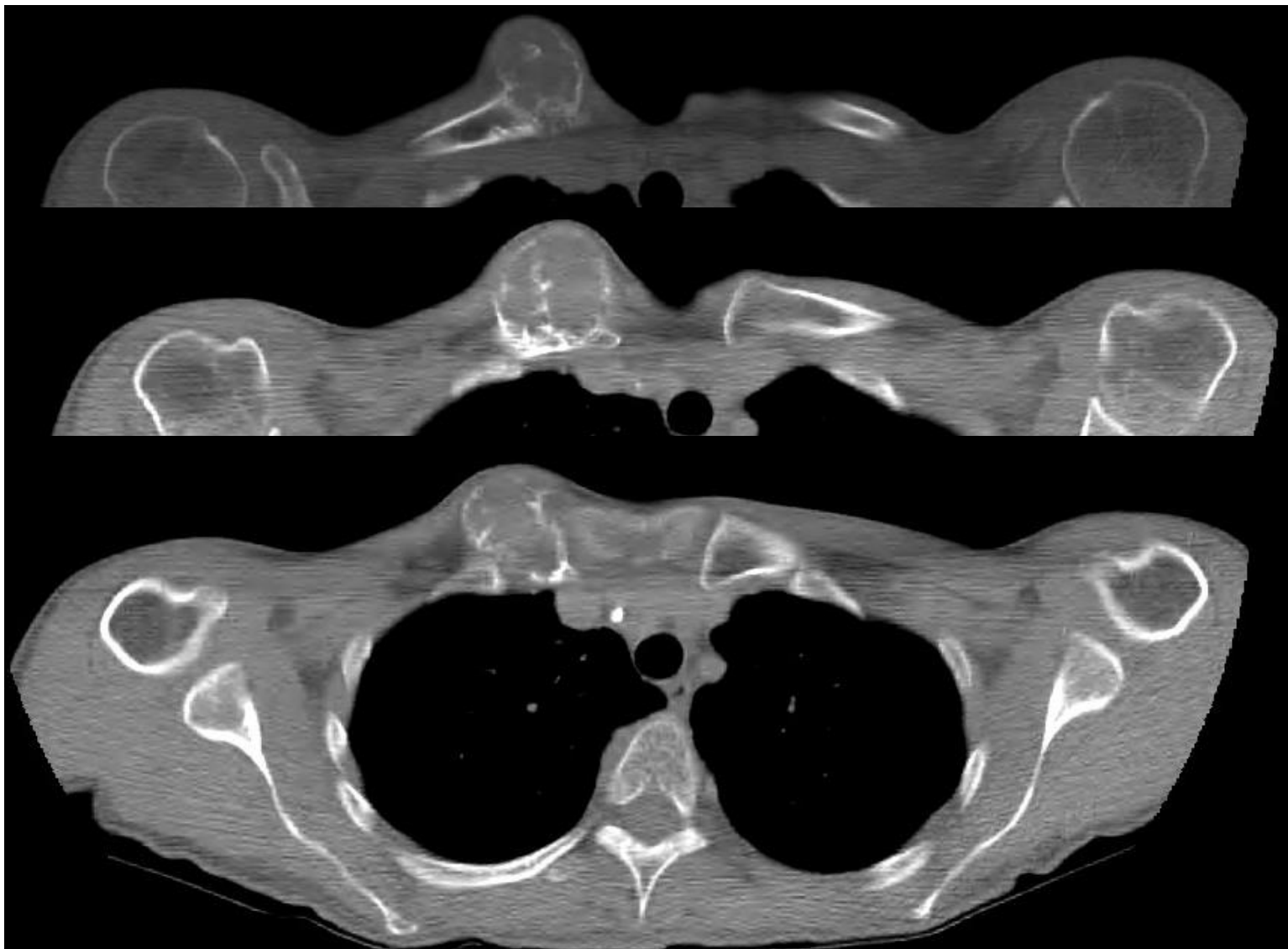
♀ 51Y

PMH: 1970 clavicle Fx
**1986 sternoclavicular
luxation**

**since 1996 increasing R sternoclavicular
pain and swelling**

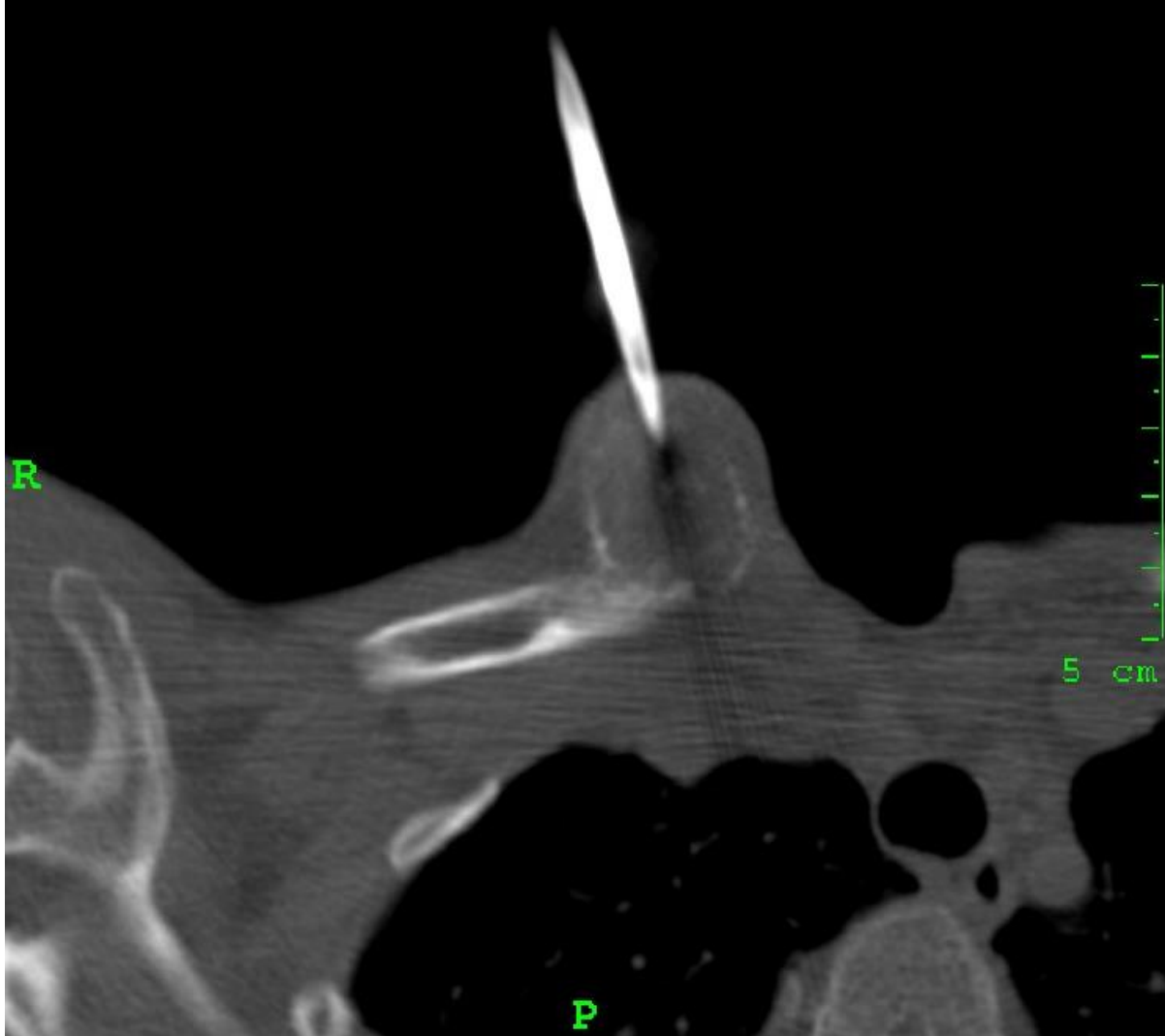
20.6.2008 referral

medial clavicle CT 7.3.2008



medial clavicle

CT-Biopsy 20.6.2008

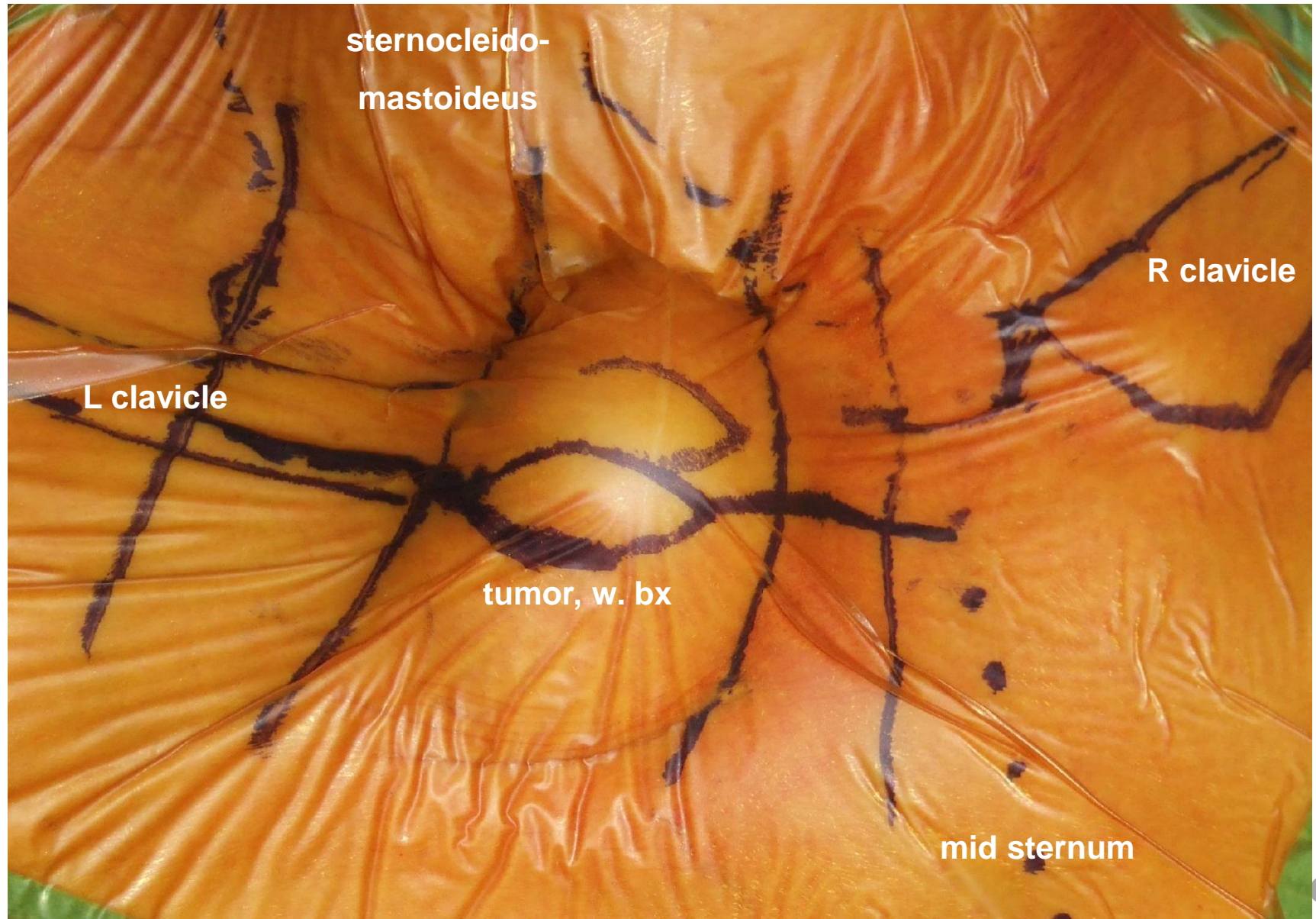


medial clavicle Biopsy 20.6.2008

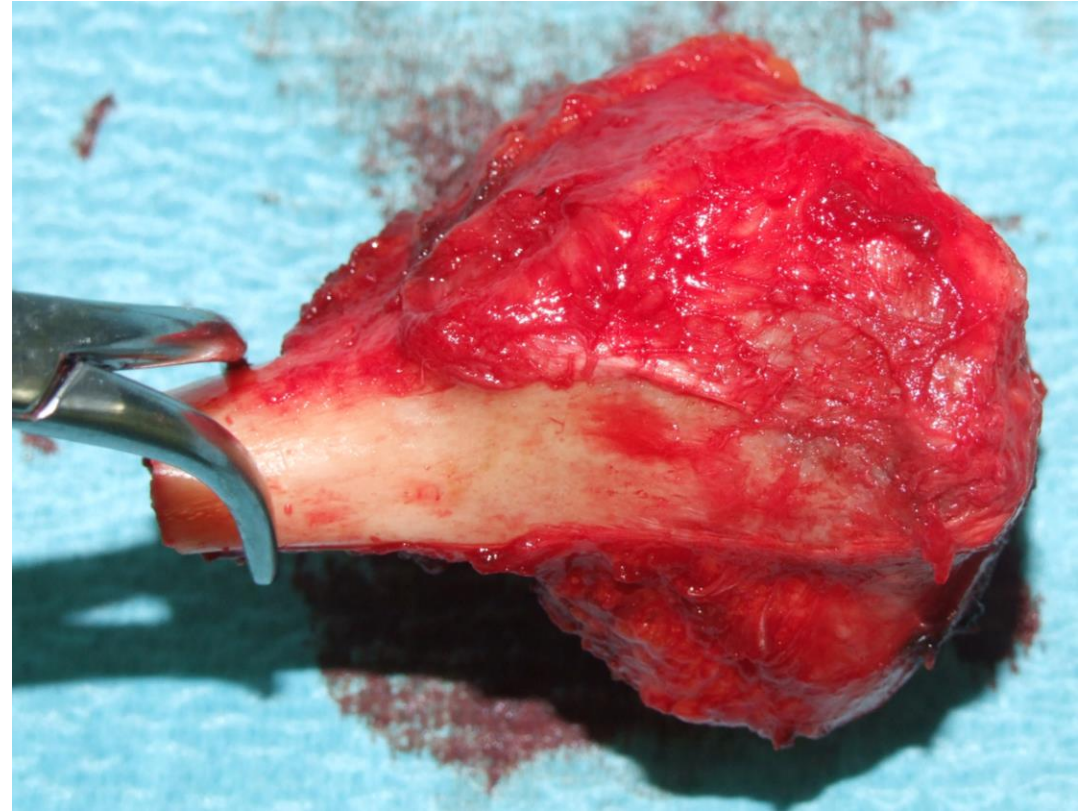
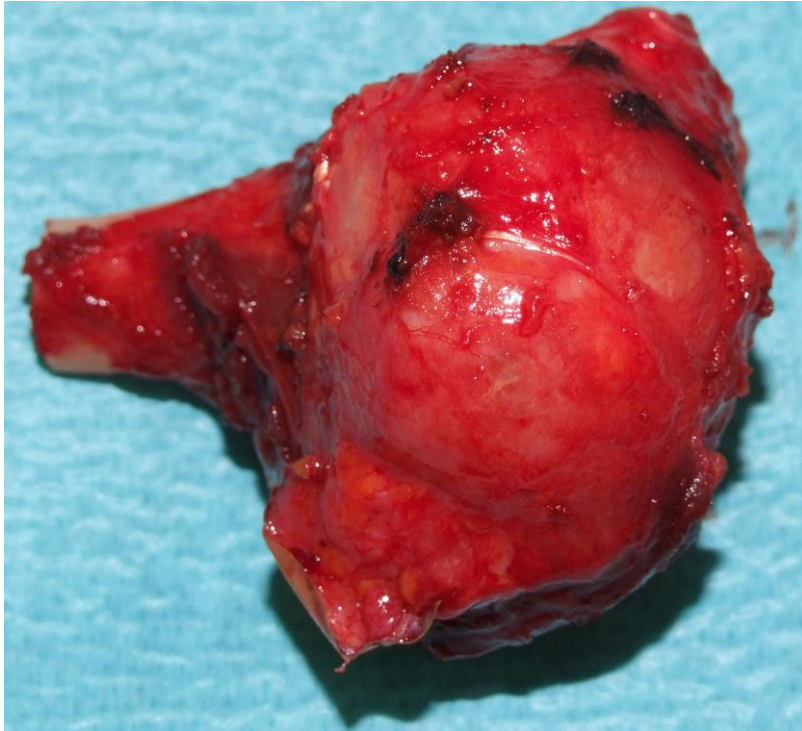
Biopsy:

low grade chondrosarcoma

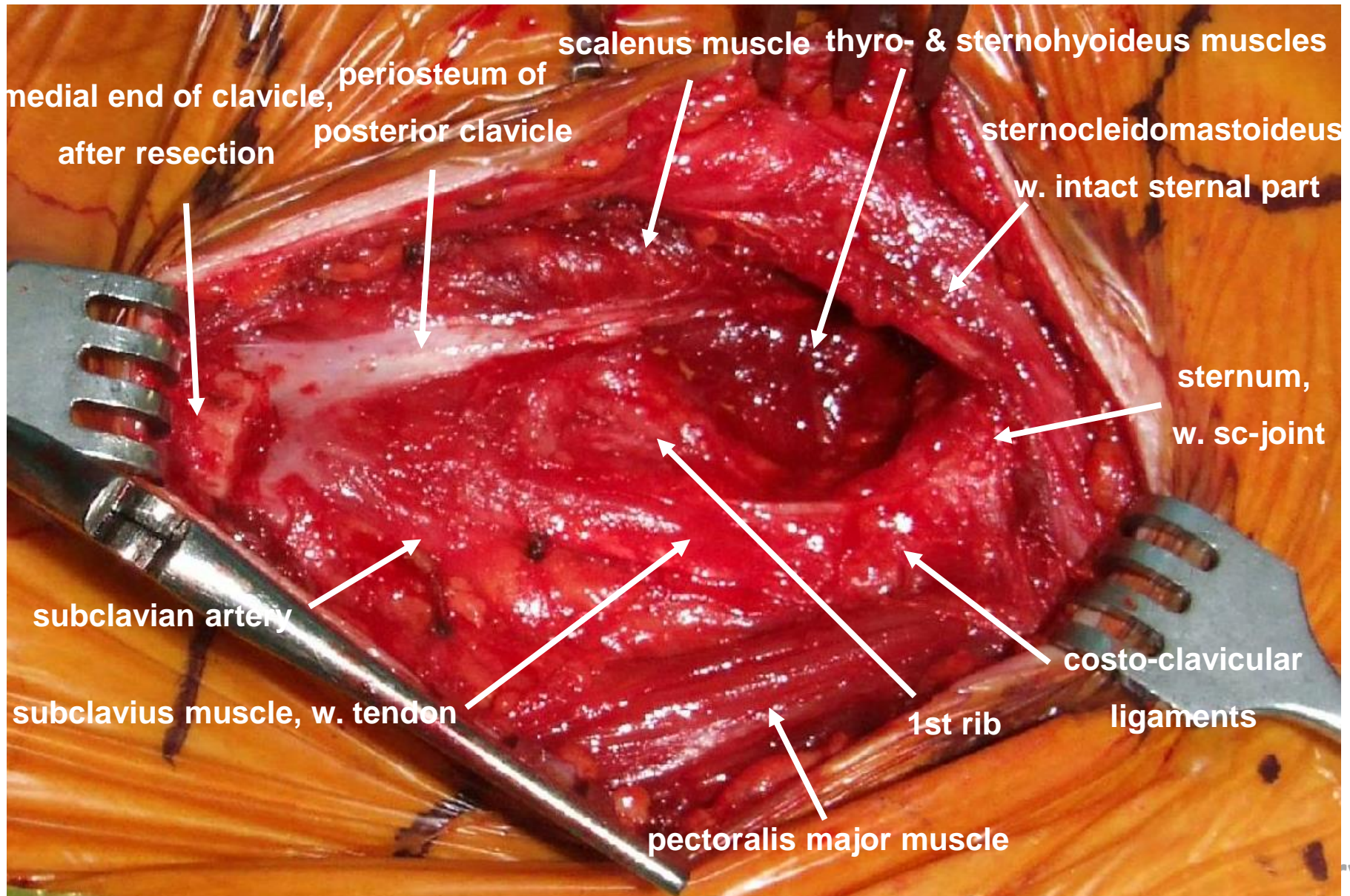
medial clavicle Resection 31.7.2008



medial clavicle Resection 31.7.2008



medial clavicle Resection 31.7.2008



medial clavicle Resection 31.7.2008

Resection:

Chondrosarcoma grade 1

medial clavicle postop Rx after Resection

